

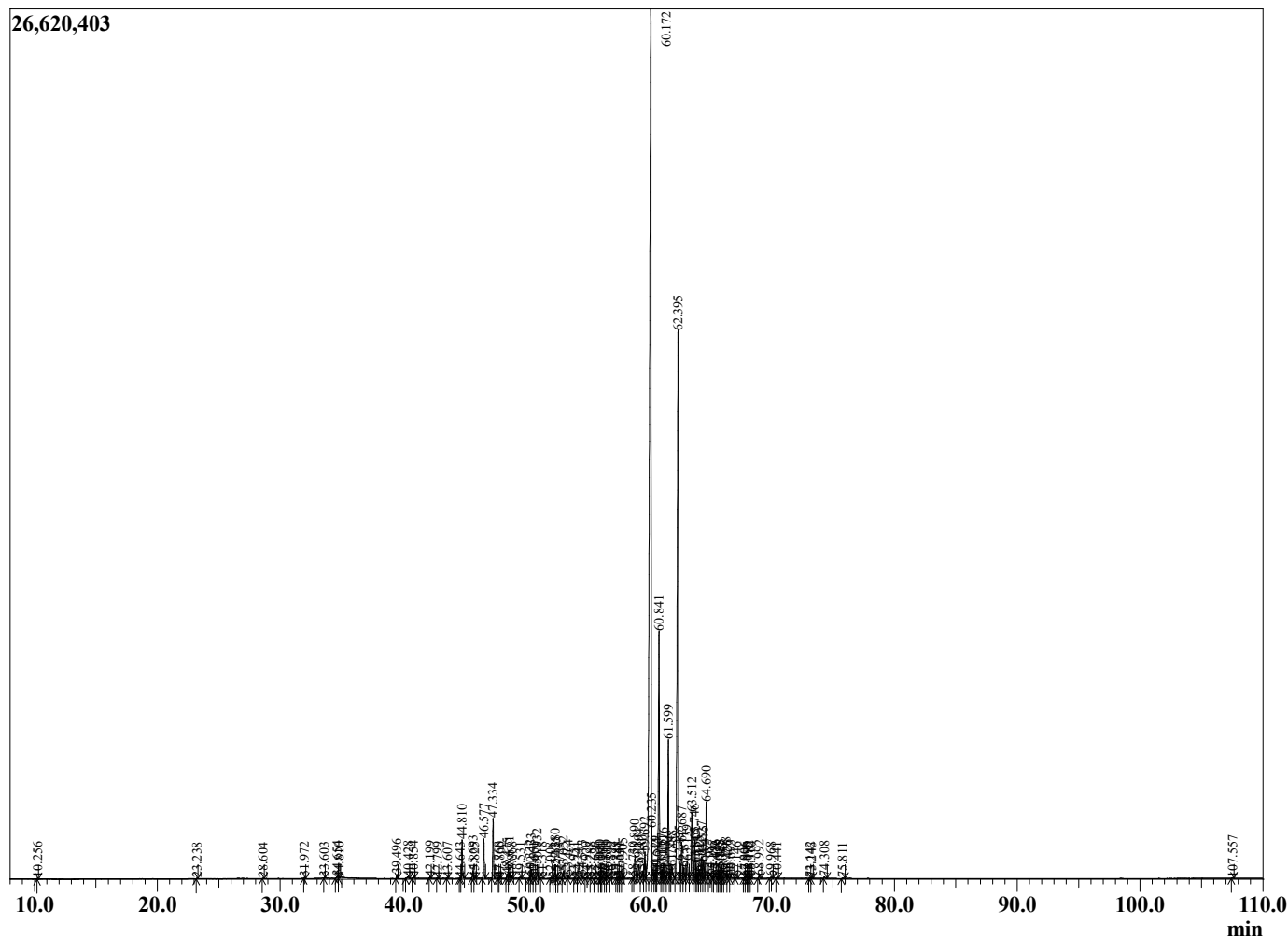
Sample Information

Sample Type : Essential Oil
 Sample Name : Santalum album
 Injection : 0.10
 Volume :

Sandalwood India
 Lot# IDK36-KE
 Country: India



Chromatogram Santalum album



R.Time	Name	Area%
10.256	Santene	0.02
23.238	Linalool	0.02
28.604	N-Furfuryl pyrrole	0.01
31.972	Unidentified	0.03
33.603	Geraniol	0.01
34.654	Teresantalic acid analogue	0.07
34.810	Geranial	0.01
39.496	Santalal analogue	0.11
40.428	Eugenol	0.08
40.854	Neryl acetate	0.04
42.199	Unidentified	0.03
42.799	7-epi-Sesquithujene	0.02
43.607	nortricyclo-eka-Santalic acid	0.01
44.643	alpha-Cedrene	0.01
44.810	alpha-Santalene	1.02
45.693	trans-alpha-Bergamotene	0.21
45.825	Unidentified	0.02
46.577	epi-beta-Santalene	1.00
47.334	beta-Santalene	1.53
47.768	alpha-Acoradiene	0.01
47.860	beta-Acoradiene	0.01
48.475	gamma-Curcumene	0.13
48.671	Ar-Curcumene	0.16
48.868	trans-beta-Bergamotene	0.03
49.531	tricyclo-eka-Santalic acid analogue	0.05
50.332	beta-Bisabolene	0.06
50.433	beta-Curcumene	0.26
50.661	Unidentified	0.02
50.932	alpha-Teresantalic acid	0.37
51.318	Unidentified	0.03
52.008	Unidentified	0.02
52.380	alpha-Ekasantalic acid	0.39
52.435	cis-Sesquisabinene hydrate	0.10
52.728	Unidentified	0.02
53.052	Santalic acid analogue	0.20
53.464	Unidentified	0.07
53.951	Dendrolasin	0.01
54.241	Unidentified	0.03
54.573	trans-Sesquisabinene hydrate	0.07
54.929	Unidentified	0.02
55.288	Unidentified	0.01
55.626	Unidentified	0.02
56.030	Unidentified	0.07
56.090	Unidentified	0.02
56.261	Unidentified	0.04
56.510	Unidentified	0.03
56.619	Unidentified	0.08
56.899	Unidentified	0.02
57.388	Unidentified	0.02
57.547	Unidentified	0.04
57.651	alpha-Acorenol	0.03
57.905	beta-Acorenol	0.14
58.730	Unidentified	0.02
58.890	Khusilal	0.71
59.194	trans-alpha-Santalal	0.45
59.480	cis-alpha-Santalal analogue	0.22

R.Time	Name	Area%
59.692	Unidentified	0.74
60.172	cis-alpha-Santalol	44.80
60.235	cis-alpha-Santalal	0.97
60.529	Unidentified	0.23
60.644	alpha-Bisabolol	0.11
60.841	cis-alpha-trans-Bergamotol	7.50
61.067	alpha-Santalol analogue	0.30
61.216	trans-alpha-Santalol	0.42
61.343	Unidentified	0.05
61.599	cis-epi-beta-Santalol	3.76
61.724	Unidentified	0.21
61.888	cis-alpha-trans-Bergamotol	0.55
62.395	cis-beta-Santalol	21.02
62.495	trans-epi-beta-Santalol	0.45
62.687	cis-Nuciferol	1.12
62.871	cis-beta-Santalol	0.35
63.139	Unidentified	0.62
63.512	trans-beta-Santalol	1.83
63.746	Unidentified	1.16
63.815	Bergamotol analogue	0.33
64.015	Unidentified	0.18
64.125	trans-alpha-trans-Bergamotol	0.26
64.327	trans-Nuciferol	0.61
64.475	Unidentified	0.60
64.690	cis-Lanceol	2.23
64.987	Unidentified	0.22
65.195	Unidentified	0.05
65.436	alpha-trans-Bergamotol analogue	0.10
65.608	Unidentified	0.03
65.785	Unidentified	0.06
65.823	Unidentified	0.11
66.043	Unidentified	0.02
66.298	Lanceol isomer	0.16
66.426	Unidentified	0.07
66.693	Unidentified	0.08
67.146	Unidentified	0.03
67.806	Unidentified	0.02
67.906	Unidentified	0.05
68.075	Unidentified	0.02
68.182	Unidentified	0.06
68.310	Unidentified	0.02
68.992	Unidentified	0.07
69.968	Unidentified	0.05
70.441	Unidentified	0.03
73.142	Unidentified	0.02
73.246	Unidentified	0.02
74.308	Unidentified	0.06
75.811	Unidentified	0.02
107.557	Unidentified	0.02
		100.00